

*Experience*  
A WORLD OF INDULGENCE WITH A  
**GOLF STYLE LIVING!**



Artistic Impression

**M3M**  
**CAPITAL**  
LUXURY GOLF RESIDENCES

📍 SECTOR 113, SMART CITY DELHI AIRPORT, GURUGRAM

# CONNECTED TO ALL MAJOR LANDMARKS

THROUGH THE WIDEST ROAD OF DELHI NCR

## AT THE CENTER OF EVERYTHING

## ENJOYING THE SOCIAL FABRIC OF DELHI AND GURUGRAM



TO INTERNATIONAL AIRPORT (IGI)

TO ASIA'S LARGEST CONVENTION & EXHIBITION CENTRE

TO DIPLOMATIC ENCLAVE

TO SOUTH DELHI

TO DELHI'S LARGEST TRANSPORTATION HUB

TO INTERNATIONAL SPORTS COMPLEX

15+ INTERNATIONAL SCHOOLS

8+ MULTI-SPECIALITY HOSPITALS

5+ FIVE STAR HOTELS





ARTISTIC IMPRESSION

## RIISING IN THE HEART OF DELHI-NCR

---



ADJACENT TO DELHI



RIGHT NEXT TO  
INTERNATIONAL AIRPORT (IGI)



JUST A STONE'S THROW  
AWAY FROM IICC



DIPLOMATIC ENCLAVE II  
IN CLOSE VICINITY

Discover what awaits you when you make M3M Capital your new home. From the open green spaces to the finest closed interiors to a location that connects you to the world, all this gets enclosed in this single destination.

# UNMATCHED & UNPARALLELED LIVING EXPERIENCE

100+ AMENITIES AND SERVICES



SOAK IN THE SUN IN  
AN **OUTDOOR POOL**

BRING YOUR **SPORTS**  
PASSION ALIVE



LET YOUR  
CHILDREN RUN FREE IN  
**SAFE ENVIRONS**



DINE-IN AT THE  
**LARGEST CLUBHOUSE**  
IN THE VICINITY





ARTISTIC IMPRESSION

## 2.5 & 3.5 BHK LUXURY GOLF RESIDENCES

HIGHLY  
EFFICIENT HOMES

PRIVATE FOYER  
WITH EVERY RESIDENCE

SPACIOUS  
BALCONIES

**M&M**  
**0.5 EDGE** | CUSTOMIZE YOUR EXTRA  
0.5 ROOM YOUR OWN WAY !



ARTISTIC IMPRESSION



ARTISTIC IMPRESSION



ARTISTIC IMPRESSION

HOME LIBRARY

HOME OFFICE

HOME GYM



ARTISTIC IMPRESSION

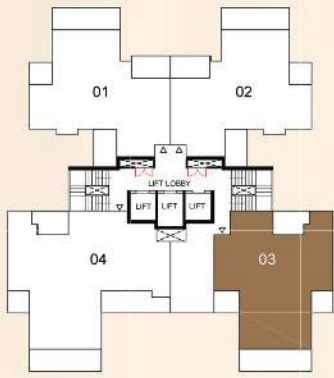


ARTISTIC IMPRESSION

DEDICATED DROP-OFF

GRAND TOWER LOBBY

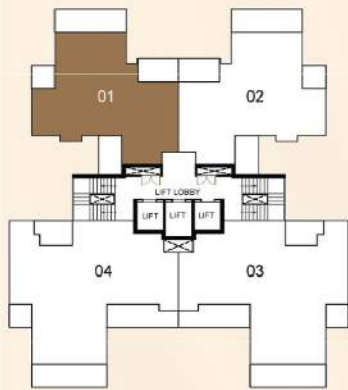
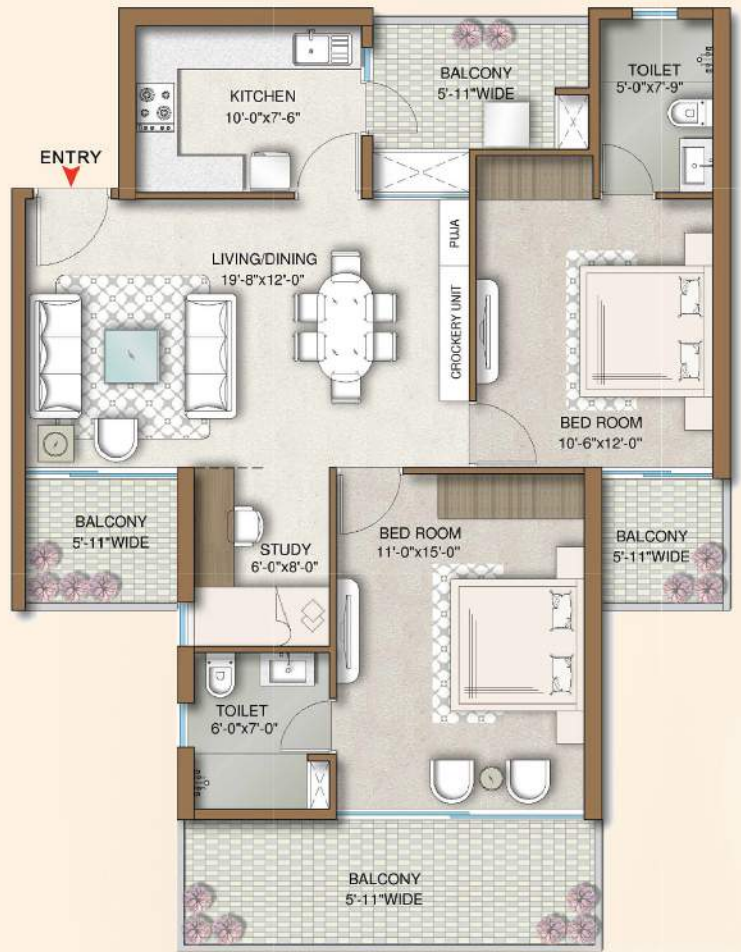




## UNIT PLAN 2.5 BHK

PRIVATE FOYER + 2.5 BEDROOM  
2 BEDROOMS + 0.5 BHK - STUDY/BAR/DEN  
EXCLUSIVE STORAGE AREA

1,330 SQ. FT. (APPROX.)



## UNIT PLAN 2.5 BHK

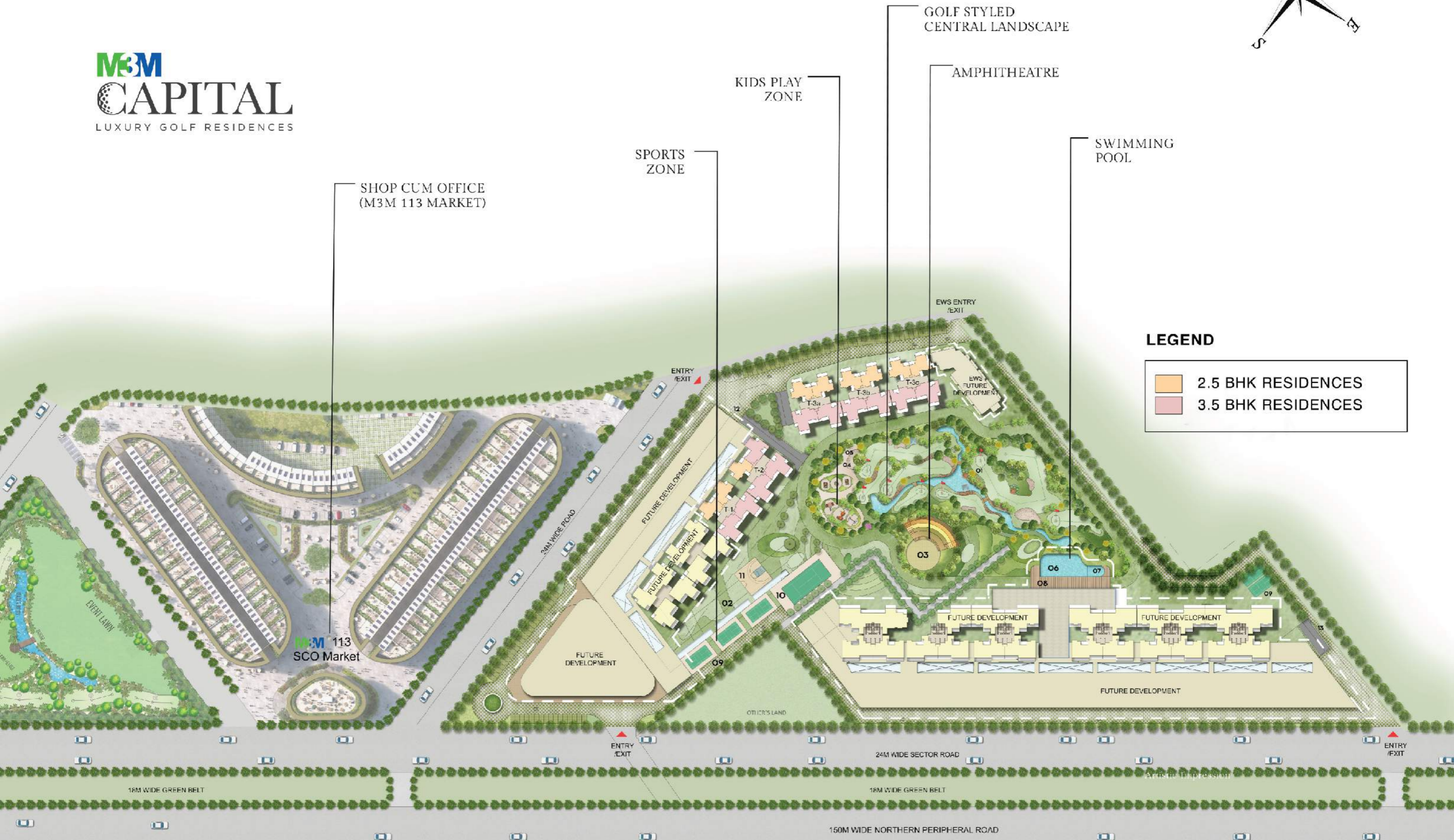
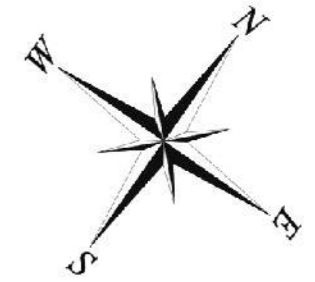
PRIVATE FOYER + 2.5 BEDROOM  
2 BEDROOMS + 0.5 BHK - STUDY/BAR/DEN  
EXCLUSIVE STORAGE AREA

1,310 SQ. FT. (APPROX.)



# A CITY WITHIN ITSELF

**M3M**  
**CAPITAL**  
 LUXURY GOLF RESIDENCES



**LEGEND**

<span style="display:inline-block; width:15px; height:15px; background-color:orange; border:1px solid black;"></span>	2.5 BHK RESIDENCES
<span style="display:inline-block; width:15px; height:15px; background-color:lightcoral; border:1px solid black;"></span>	3.5 BHK RESIDENCES





**UNION BUILDMART PRIVATE LIMITED**  
(CIN- U70100HR2012PTC089615)

**Registered Office :**

Unit No. SB/C/5L/Office/008, M3M Urbana Sector-67,  
Gurugram, Manesar, Urban Complex, Gurugram-122102 , Haryana, India

**Sales Gallery**

M3M Experia, Sector-113, Smart City, Delhi Airport, Dwarka Expressway, Gurugram-122017,  
Haryana, India

**CRM Cell**

M3M Urbana Business Park, 10<sup>th</sup> Floor,  
Tower A, Sector - 67, Golf Course Road (Extn.),  
Gurugram-122101, Haryana, India

**Project Site**

M3M Capital, Sector-113, Smart City, Delhi Airport, Dwarka Expressway,  
Gurugram-122017, Haryana, India

+0124 47320000 | 1800 123 3333 | [www.M3MCapital.com](http://www.M3MCapital.com)

Disclaimers: All information, images and visuals or sketches including landscaping shown in this advertisement are only an architect's impression, representative images or artistic renderings and not to scale. Nothing contained herein intends to constitute a legal offer and does not form part of any legally binding agreement and/or commitment of any nature. The Promoter Company endeavours to keep the information up to date and correct. Recipients/viewers are advised to exercise their discretion in relying on the information shown/provided and are requested to verify all the details, including area, amenities, services, terms of sales and payments and other relevant terms independently with the Promoter Company, have thorough understanding of the same and take appropriate advice prior to concluding any decision for buying any Unit(s) in the Project.

"M3M Capital" is a residential Group Housing Colony which is registered with Haryana Real Estate Regulatory Authority vide Regn. No. RC/REP/HARERA/GGM/531/263/2022/06, dated 02.02.2022, being developed on the Project land admeasuring 4.856 acres being part of total licensed land admeasuring 15.03125 acres, situated at Sector-113, Gurugram, Haryana. The project is being developed by M/s Union Buildmart Private Limited vide a license from DTCP under New Integrated Licensing Policy- 2016. All facilities and Project details mentioned in this advertisement are actual specifications, amenities and facilities provided by the Promoter Company as per approved plans. The use of word 'M3M' shall in no manner be construed or interpreted as M3M India Pvt. Ltd. being the Promoter and / or Developer of the Project.

Dispute with regard to the interpretation of information will be subject to the exclusive jurisdiction of District Courts at Gurugram and Hon'ble High Court of Punjab & Haryana at Chandigarh, India.

\*Taxes and statutory charges extra as applicable and terms and conditions apply

\*\*Terms & Conditions apply. 1 Hect. = 2.471Acres, 1 Acre = 4840 sq. yds. or 4046.86 sq. mtrs., 1 sq. mtr. = 10.764 sq.ft.